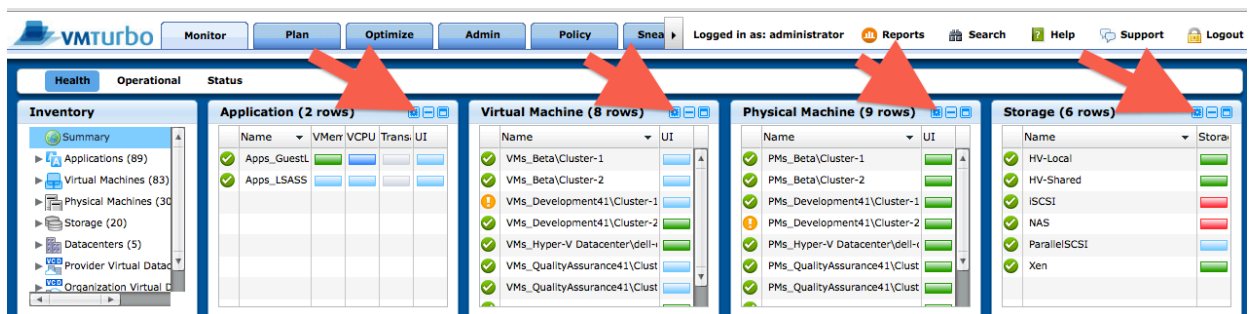


How to Customize Health Heat Maps

Starting with Operations Manager 3.0 VMTurbo introduced the ability to customize what the Health Monitor Heat Maps display, and the Scope of this view.

Once you install or update to version 3, you should notice this change by viewing Monitor (tab) > Health view (the default view when logging into VMTurbo).

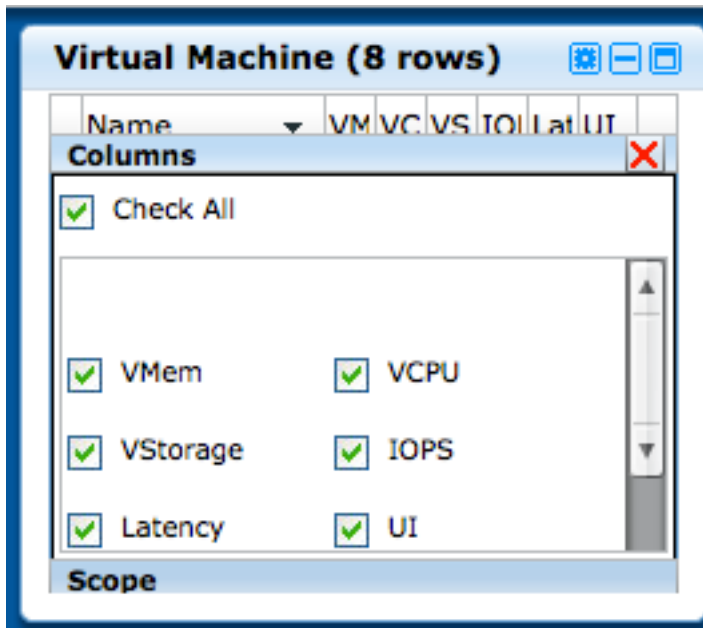
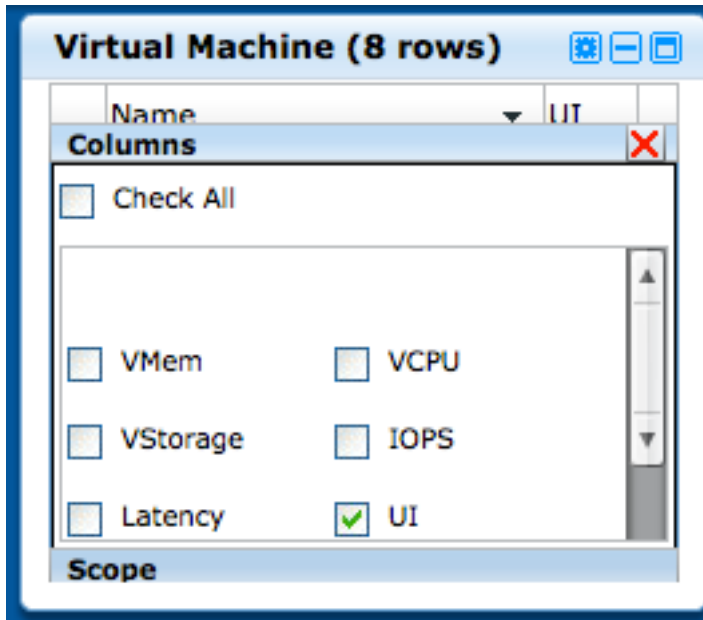


The screenshot displays the VMTurbo Health Monitor interface. The top navigation bar includes tabs for Monitor, Plan, Optimize, Admin, Policy, and Sneak. The main content area is divided into several sections:

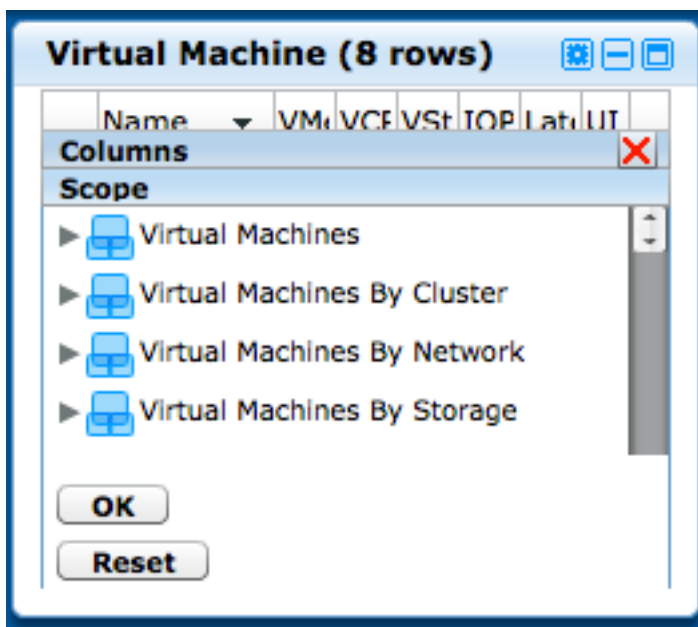
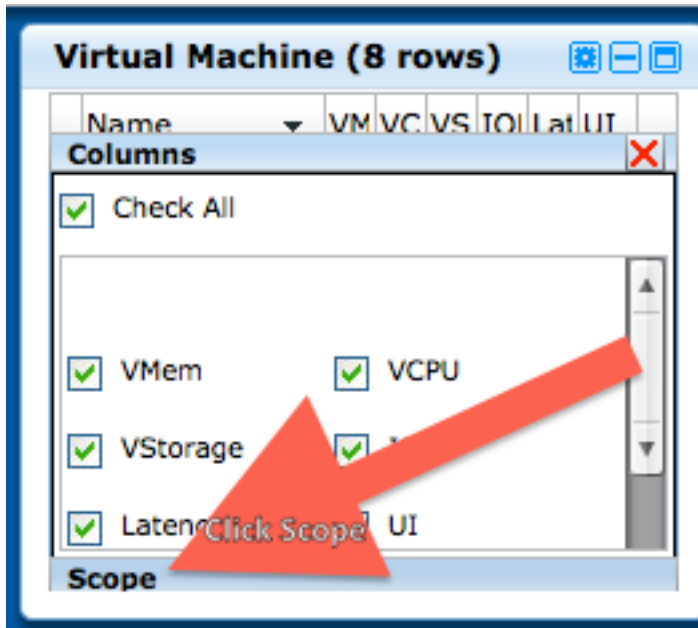
- Inventory:** A tree view on the left showing categories like Applications (89), Virtual Machines (83), Physical Machines (30), Storage (20), Datacenters (5), and Organization Virtual.
- Application (2 rows):** A table with columns for Name, VMem, VCPU, Trans, and UI. It shows two rows: Apps_GuestL and Apps_LSASS, both with green checkmarks.
- Virtual Machine (8 rows):** A table with columns for Name and UI. It lists various VMs like VMS_Beta(Cluster-1), VMS_Development41(Cluster-1), and VMS_QualityAssurance41(Clust), with green checkmarks.
- Physical Machine (9 rows):** A table with columns for Name and UI. It lists PMs like PMS_Beta(Cluster-1), PMS_Development41(Cluster-1), and PMS_QualityAssurance41(Clust), with green checkmarks.
- Storage (6 rows):** A table with columns for Name and Storage. It lists storage types like HV-Local, HV-Shared, ISCSI, NAS, ParallelSCSI, and Xen, with green checkmarks.

Four red arrows point to the top of each of these four main data tables, indicating the scope of the view.

Clicking the gear icon for a View (E.g. Virtual Machines) displays the available metrics for that Heat Map:



In addition to allowing users the freedom to view the data you want to see, VMTurbo also allows you to view this data within a **Scope** that you want to see.



Select the Scope you want to see and click OK.